

SECOND LEVEL



The Discovery Room
Children enter a world of authentic hands-on science and interactive discovery. Explore major fields of scientific research, from anthropology to zoology. Excited, engaged children will find an array of artifacts and specimens, puzzles, and scientific challenges. Bonus... find ancient fossils in the stone walls of the balcony! Children must be accompanied by a caregiver.



MAP STEAM Academy Preschool
A groundbreaking preschool for children ages 3 to 5 years old. **LEARN MORE:** mapsteamacademy.org



Pterosaurs



GENERAL ADMISSION	
Great Hall Exhibits	FREE
Discovery Room plus Virtual Reality	
Children + Adults	\$5

PROGRAMS AT THE MAP

STEAM Academy PRESCHOOL + Kids Camps (Youth Program - DISCOUNTS for Members)
The MAP STEAM Academy is a groundbreaking preschool for children ages 3 to 5 years old. The MAP also hosts several camps each year such as Paleo Rocks, Mission to Mars and many more. Be sure to sign up for our e-newsletter and follow the museum on social to get details on all our events, programs and camps!

Little Explorers Club (3-5 Years Old - FREE for Members)
These fun-filled 45-minute sessions guide children through a STEAM topic with Museum scientists. Each exploratory session includes story time, an activity or experiment, artifact or animal encounters, and a craft.

JAM Sessions (Elementary Learners - FREE for Members)
Junior Adventurers at the Museum (JAM) Sessions engage students in hands-on, inquiry-based activities to familiarize students with STEM-essentials.

Virtual Science Happy Hour (Adult + Young Adult Programs - FREE for Members)
Science Happy Hour features a presentation by an expert in a particular STEAM field such as paleontology and astronomy. In-person Happy Hour on hiatus due to Covid Safety Measures.

Cinema + Science (Adult + Youth Programs - FREE or Discounted for Members based on availability)
Enjoy special movie screenings at AMC Prairiefire 17 plus an engaging panel discussion. Followed by a meet and greet with film makers, scientists and field experts.

Host a PRIVATE EVENT at the MAP... Don't forget to ask about Member Discounts!
We are excited to provide a one-of-a-kind setting and customized packages for your wedding, family celebration, charity, or corporate event! Please call us or email info@visitthemap.org for information.



VISITOR GUIDE



OUR MISSION

Through a founding collaboration with the American Museum of Natural History, as well as with other cultural and educational institutions in the nation, the Museum at Prairiefire is a place that provides ACCESS FOR ALL to understand and celebrate natural history and science in our region and around the world. The Museum engages visitors and students with world-class exhibitions, important programming, and significant educational and STEAM opportunities.

Learn more about KC Urban Advantage, our STEAM learning initiative for under-served children at kcurbanadvantage.org

MEMBERSHIP HAS ITS REWARDS

As a Member of the Museum at Prairiefire, you are supporting the Mission of the Museum, including important initiatives such as **KC Urban Advantage** which supports STEAM learning experiences for Kansas City's most underserved children.

PLUS - You receive amazing membership privileges at the MAP and Prairiefire:

- FREE** Unlimited Admission to all Exhibitions, Virtual Reality, Experiences and the Discovery Room
- FREE or DISCOUNT** Admission to Programs for Adults and Youth such as Science Happy Hour, Little Explorers Club, JAM Sessions, and more
- DISCOUNTS** at Prairiefire Dining, Shopping and Entertainment District Establishments ALL Year



Paleontology Galleries

The Real Story of T. rex

Learn about the first Tyrannosaurus rex ever discovered! Find out what scientists know now about this amazing creature, and meet Barnum Brown, the boy from Kansas who discovered the first T. rex!

Barnum Brown's Desk

This desk is a replica of the one Barnum Brown used at the American Museum of Natural History in New York for over 50 years! Watch a video about Barnum Brown, open the drawers, and learn about the 'Greatest Dinosaur Hunter'.

Appalachiosaurus

Appalachiosaurus ("Appalachian lizard") is a genus of tyrannosauroid theropod dinosaur from the Late Cretaceous Period of eastern North America. Fossils date back 77 million years.

Adalatherium

Meaning "crazy beast", Adaltherium is an extinct gondwanatherian that lived on Madagascar during the Cretaceous period.



Kansas Revealed (Opening Soon)

Join us on a revealing journey through this stunning land - KANSAS. Discover its natural history through the stories of its prehistoric natural history, diverse people and cultural crossroads. We will explore culture, fossils, artifacts, landmarks and trails that played key roles in the formation and peopling of this beautiful state.



ALIVE Interactive

Step into the ancient world and create a creature from the past! Select from modern-day sites, find a fossil, then start digging. Learn myth-busting facts about T. rex, Velociraptor and even a Kansas Pteranodon. Once complete, give it a name and watch it come ALIVE in the Great Hall!



McCown Gordon Virtual Reality Theater

The possibilities are limitless when it comes to virtual reality! Experience an ocean dive with whales and dolphins... go spacewalking as an astronaut... watch a volcano erupt right before your eyes!



Dustin J. Eskie Innovation Zone

Enjoy a place to sit and share lunch or a snack.

Kansas City Natural History

Be inspired by Kansas City's own ancient natural history in *Kansas City Paleo: Step 300 Million Years into our Past*.



The Sternberg Fossils

All of the fossils in this exhibit, including the 85 million year-old mosasaur Platecarpus and the predatory fish Xiphactinus audax, were collected and prepared by Charles Hazelius Sternberg (1850-1943), a legendary fossil hunter who spent much of his career in Kansas. Sternberg specimens are exhibited in museums across the United States and around the world.



Quetzalcoatlus - Largest Flying Animal

Quetzalcoatlus is a pterosaur known from the Late Cretaceous period of North America. It was one of the largest known flying animals of all time.



Sprint Gallery

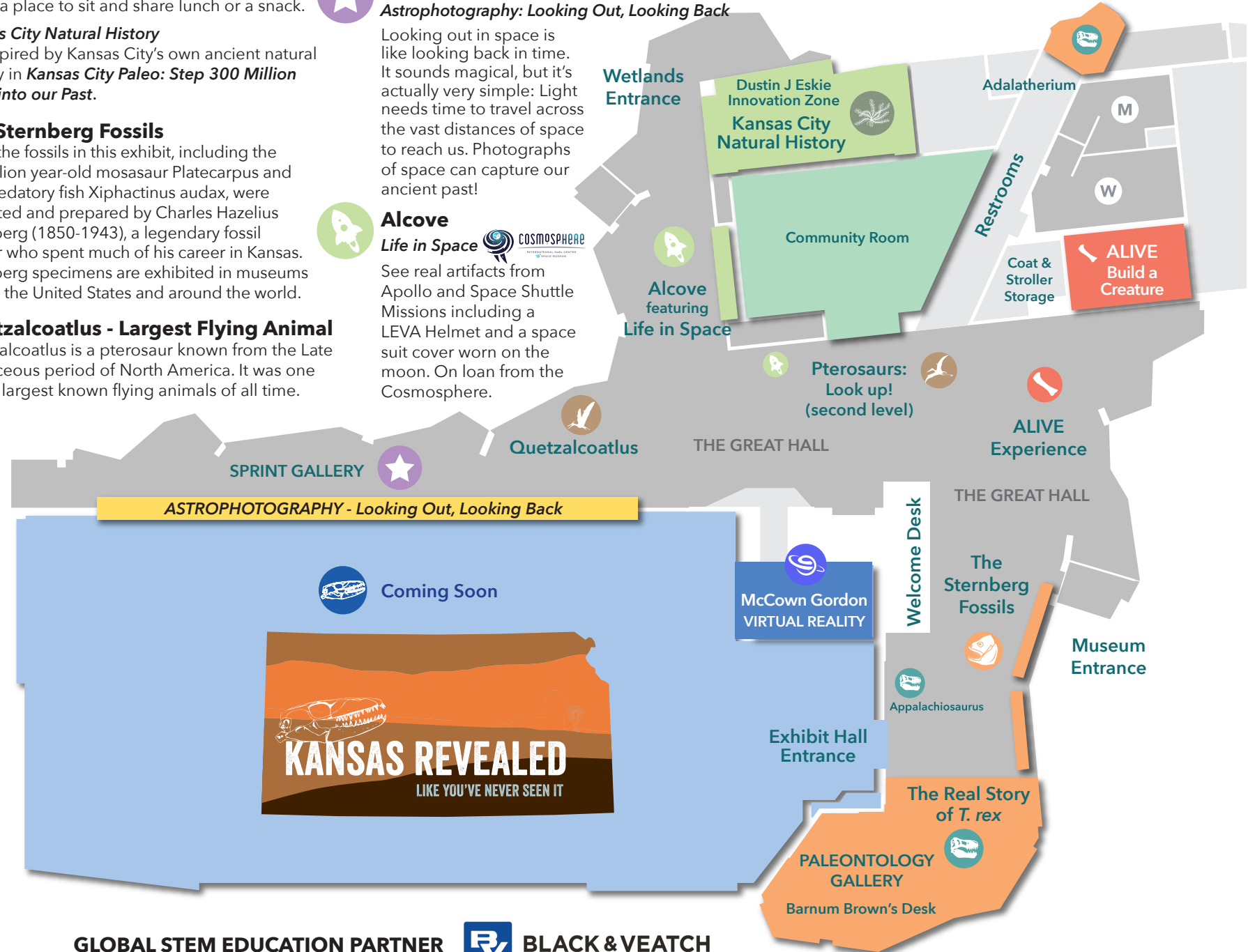
Astrophotography: Looking Out, Looking Back

Looking out in space is like looking back in time. It sounds magical, but it's actually very simple: Light needs time to travel across the vast distances of space to reach us. Photographs of space can capture our ancient past!

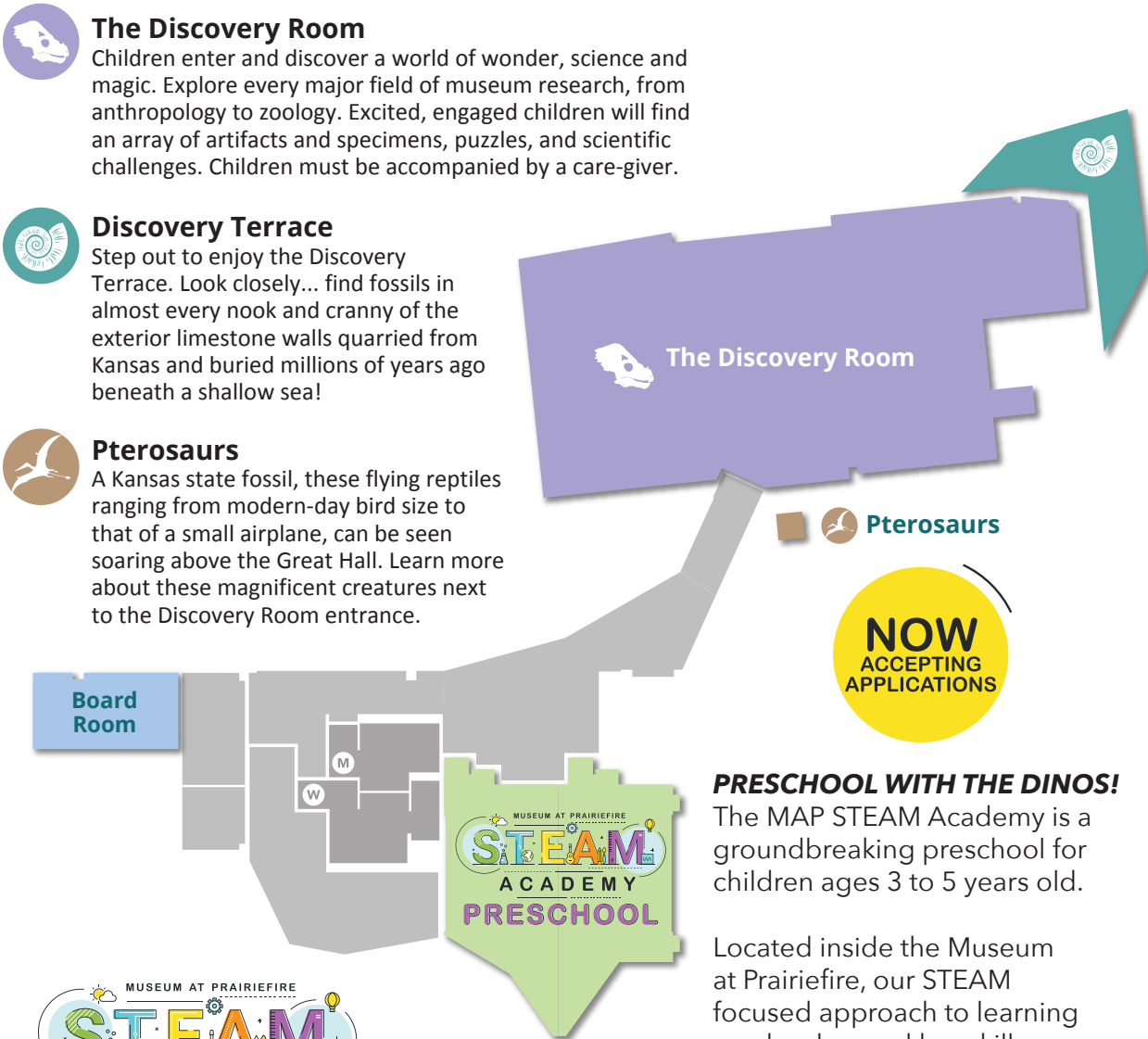


Alcove

Life in Space COSMOSPHERE INTERNATIONAL SPACE CENTER OF SPACE MUSEUMS
See real artifacts from Apollo and Space Shuttle Missions including a LEVA Helmet and a space suit cover worn on the moon. On loan from the Cosmosphere.



The Discovery Room | Second Level



The Discovery Room

Children enter and discover a world of wonder, science and magic. Explore every major field of museum research, from anthropology to zoology. Excited, engaged children will find an array of artifacts and specimens, puzzles, and scientific challenges. Children must be accompanied by a care-giver.

Discovery Terrace

Step out to enjoy the Discovery Terrace. Look closely... find fossils in almost every nook and cranny of the exterior limestone walls quarried from Kansas and buried millions of years ago beneath a shallow sea!

Pterosaurs

A Kansas state fossil, these flying reptiles ranging from modern-day bird size to that of a small airplane, can be seen soaring above the Great Hall. Learn more about these magnificent creatures next to the Discovery Room entrance.

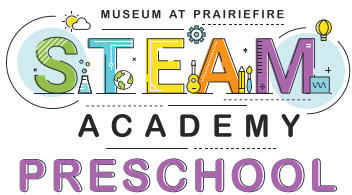
NOW
ACCEPTING
APPLICATIONS

PRESCHOOL WITH THE DINOS!

The MAP STEAM Academy is a groundbreaking preschool for children ages 3 to 5 years old.

Located inside the Museum at Prairiefire, our STEAM focused approach to learning reaches beyond key skill areas, highlighting strengths and inviting your little explorer into a world of discovery, wonder, and earth stewardship.

LEARN MORE & SCHEDULE A TOUR:
mapsteamacademy.org



STEAM ACADEMY PRESCHOOL DIRECTOR

Katie Kelly | katie@mapsteamacademy.org
(913) 333-3513 | mapsteamacademy.org

DISCOVERY ROOM



5801 West 135th Street | Overland Park | 913-333-3500 | visitthemap.org

Museum at Prairiefire Discovery Room

DISCOVERY TERRACE

